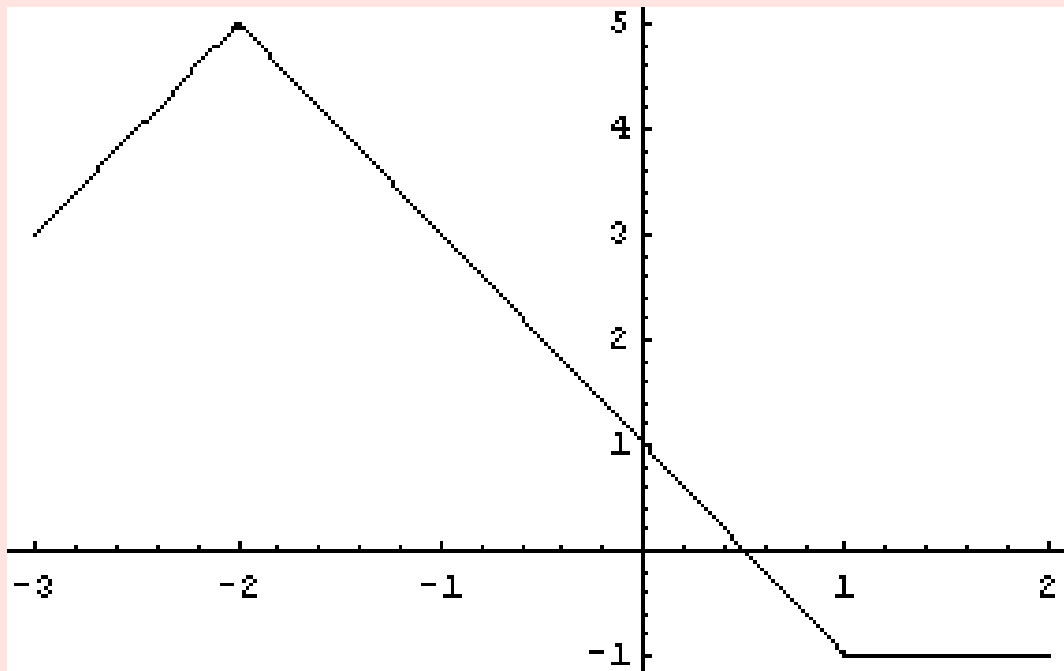


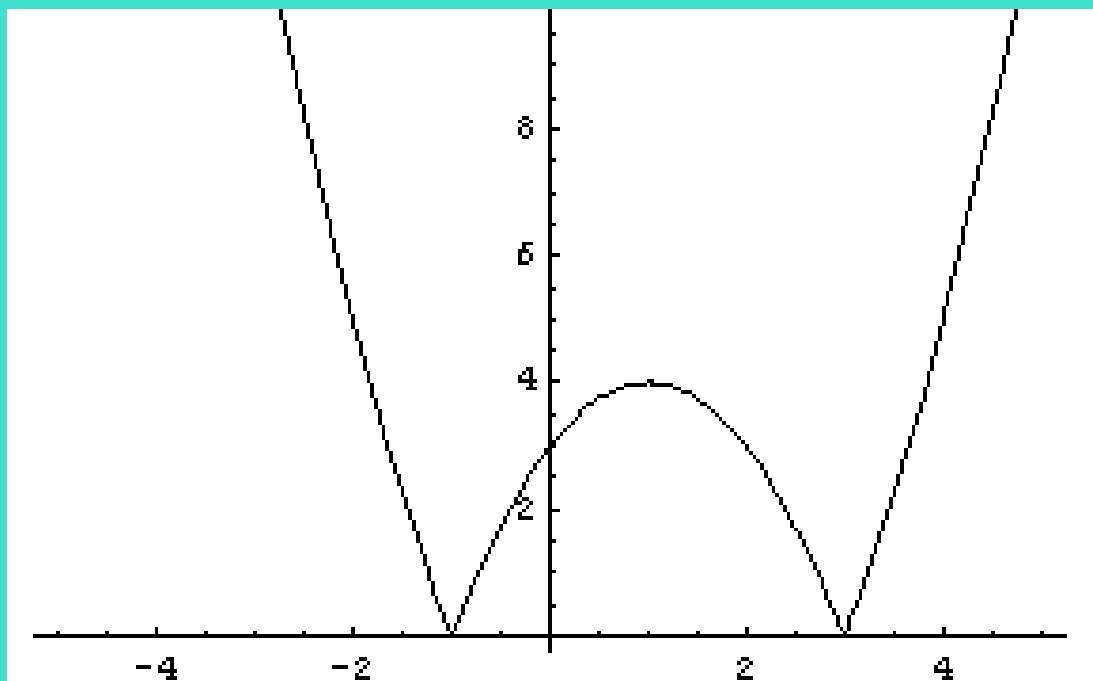
Zakreslete graf funkce, určete všechny její vlastnosti
(můžete využít i program Mathematica)

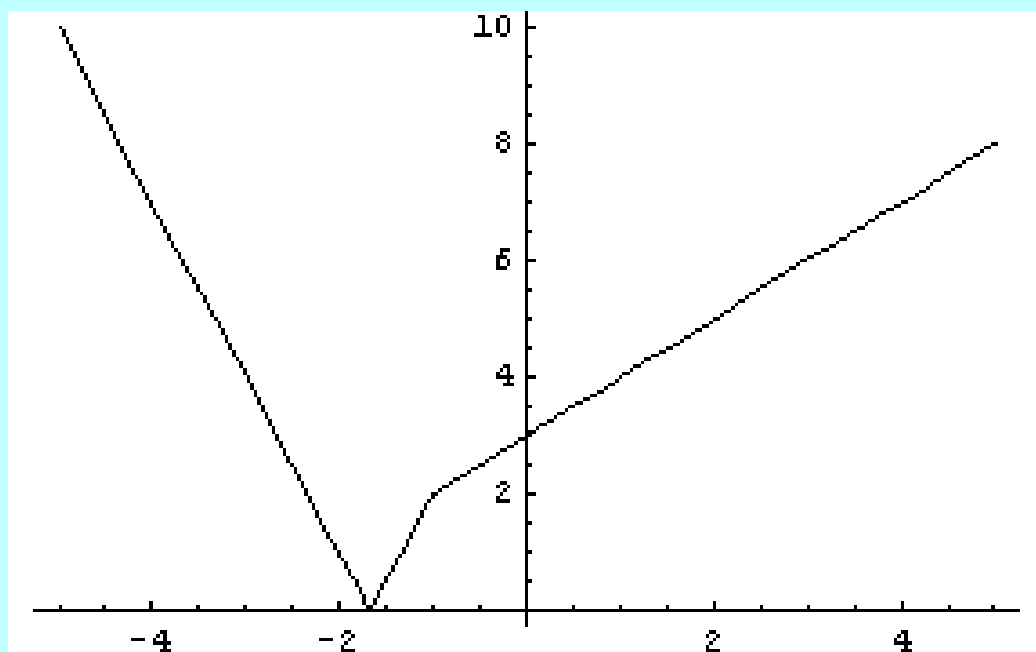
$$x + |x - 1| - 2|x + 2| + 4 \quad x \in (-3, 2)$$

$$y = |x^2 - 2x - 3|$$

$$y = |-2x + |x + 1| - 4|$$







Určete vlastnosti funkcí

